



HP DELEGATE

Jacqui Godfrey



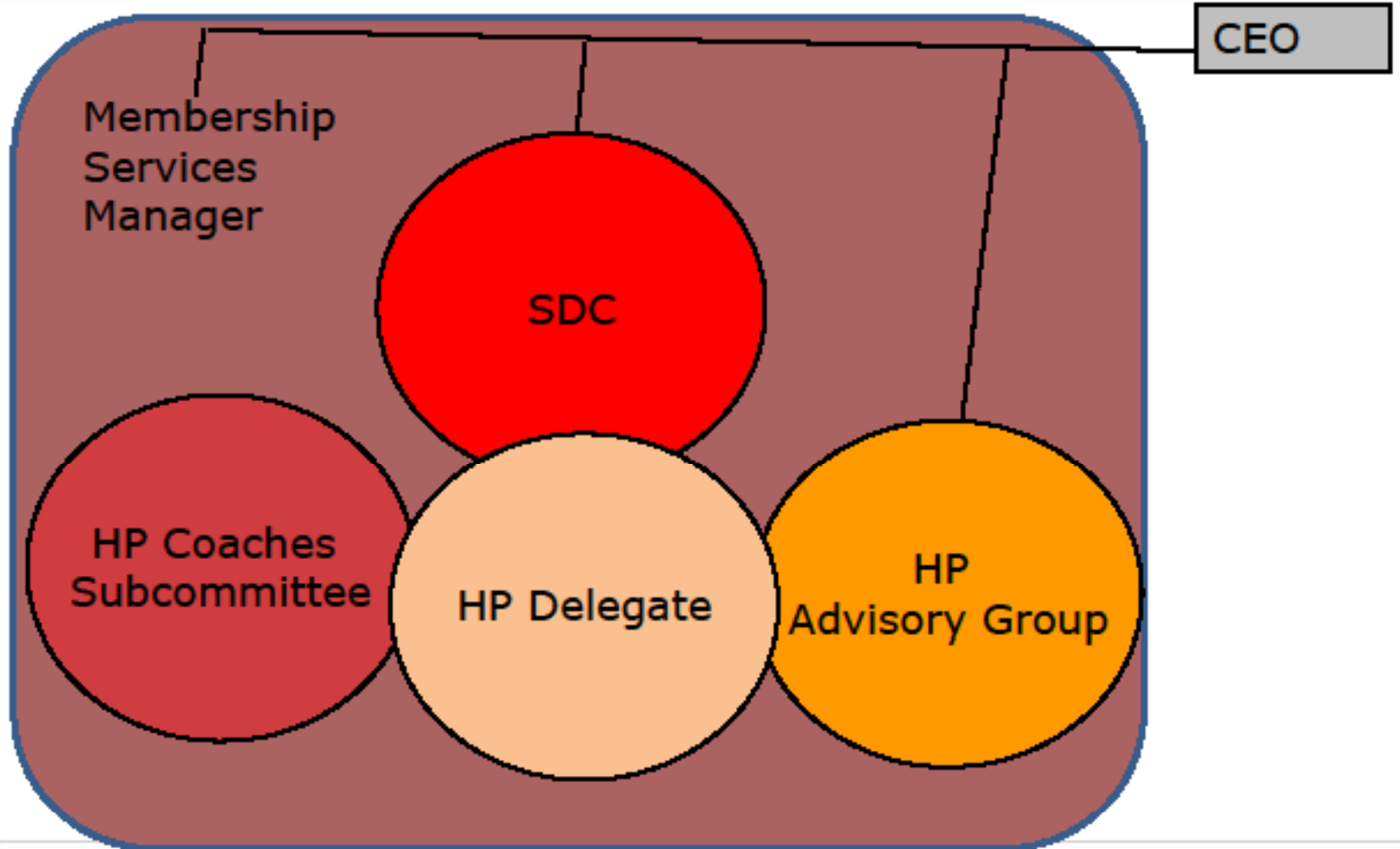
STRUCTURE OF THE CSC

- ❑ The Coach SubCommittee is made up of personal coaches of all JI and SI gymnasts
- ❑ This group makes decisions on HP-related issues – tours, selection, strategy etc.
- ❑ The HP Advisory ratifies these decisions
- ❑ The HP Delegate is the liaison point between the CSC, the SDC and the HP Advisory



GymSports
NEW

STRUCTURE OF THE CSC





WHAT'S HAPPENING?

- ❑ PAT and Skills Testing
- ❑ Squads
- ❑ 2009/2010 Tours



PAT AND SKILLS TESTING

- ❑ This has been redeveloped by the CSC for 2009 and beyond

- ❑ Available as a handout, and will be posted on the GSNZ website



SQUADS

- Talent ID Squad

AGE	PHYS. TESTING	SKILL TESTING	EXEC. SCORE	#'s	EXEC. SCORE
9/10/11 Born in '00/'99/'98	50%	30%	20%	20 athletes maximum	1 – 30
12/13/14 Born in '97/'96/'95	30%	50%	20%	10 athletes maximum	1 - 20



SQUADS

- Performance Squad

AGE	PHYSICAL TESTING	COMP. SCORE
>1996	20%	80%



SQUADS

- ❑ Full squad documents will be available from GSNZ in the near future, including pathways for gymnasts
- ❑ Gymnasts with the best execution scores overall at Nationals, will be invited to test at the next squad meet in Auckland over the weekend of 12th/13th December (date and city TBC)



2009/2010 TOURS

- 5x gymnasts touring to South African Cup in November 2009
- Trial for a team to the Pacific Rim Championships in April 2010
- A plan is currently being put into place leading up to CG 2010, including these competitions. WAG will attempt to qualify a team to CG

QUESTIONS?



Thank
you